



A diverse and
sustainable world



IUCN
World
Conservation
Congress
Barcelona 2008

Presentation

**Presentation from the Water Pavilion
at the IUCN World Conservation Congress, Barcelona 2008**

©The Author(s), all rights reserved



LAKE CHAD BASIN



**@ THE WORLD NATURE CONGRES
IUCN
October, 7th, 2008**

**Paul NOUPA
Pilotes Projects Coordinator
Paul.noupa@iucn.org**



CONTENT OF THE PRESENTATION

- 1. UNIQUENESS**
- 2. SITUATION ANALYSIS**
- 3. THREATS**
- 4. CURRENT ACTION**
- 5. PERSPECTIVE**

UNIQUENESS OF LAKE CHAD BASIN ECOSYSTEM



- 1. Home to 30 million
inhabitants by 2020**

- 2. Exceptional biodiversity**
fish, birds, large mammals

3. Economical contribution of the ecosystem:

- Fishing: 45.1 million US\$**
- Rain-fed and flood recessional cropping: 26.6 million US\$**
- Animal husbandry: 14.7 million US\$**
- Small irrigated areas: 10.8 million US\$**
- Large irrigated areas: 9.4 million US\$**



4. Unique endoréique Basin

(No access to sea)

Declared « WETLAND OF INTERNATIONAL IMPORTANCE » by Heads of 4 members States



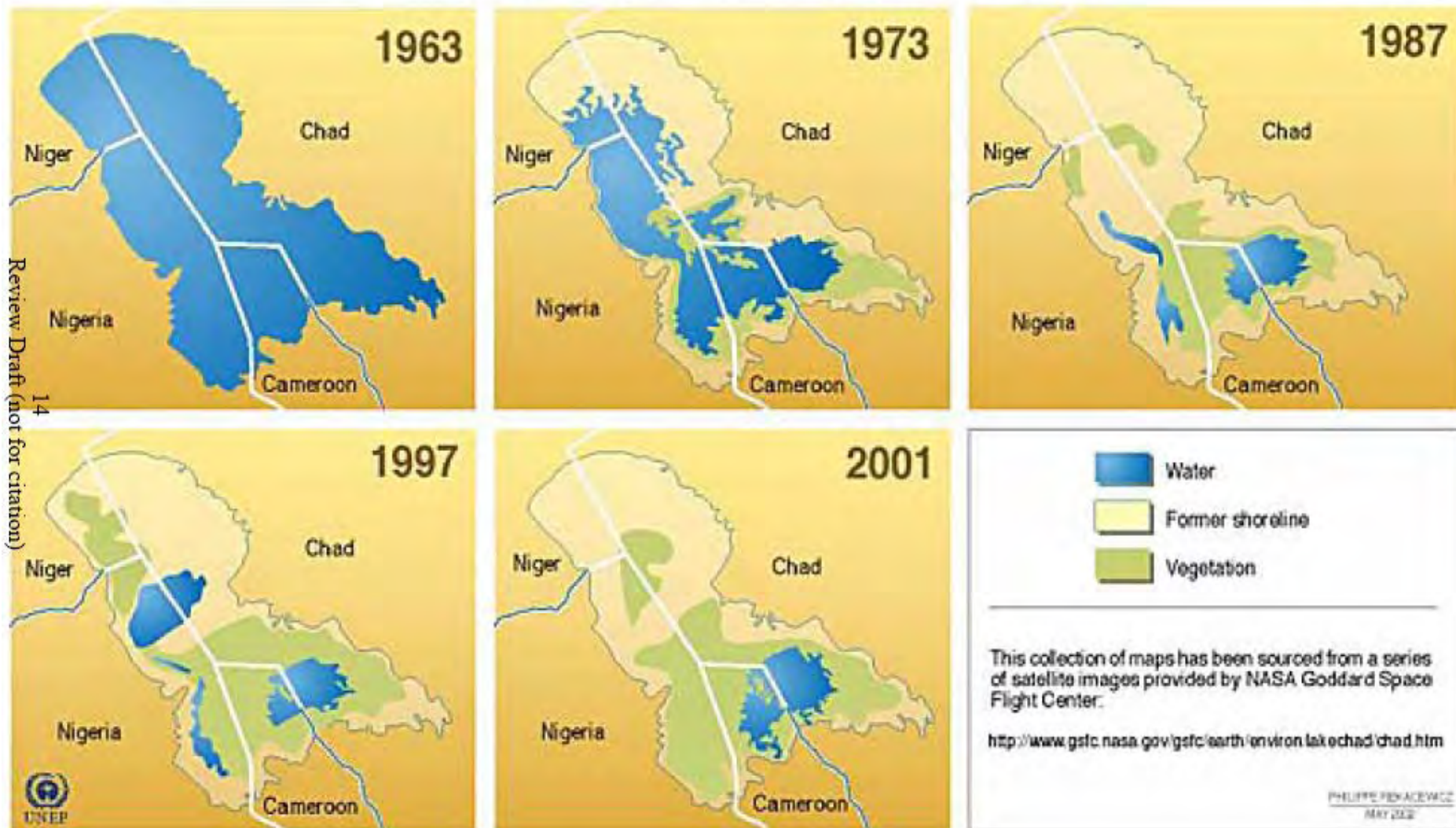
SITUATION ANALYSIS



Image Evolution of the Water Body of Lake Chad

A Chronology of Change

Natural and Anthropogenic Factors Affecting Lake Chad





**In 40 years,
Lake Chad Water Body
shrank**

- **from 25,000 Km²**
- **to 2,000 Km²**

**Loss of 92% of its initial area in 40
years.**



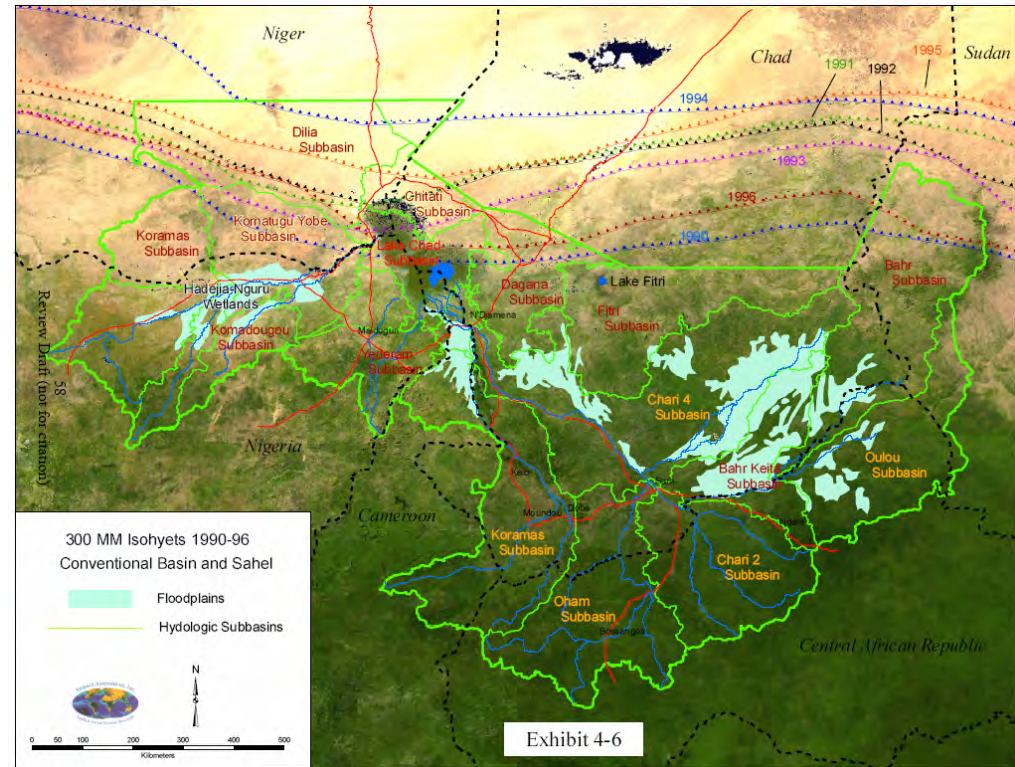
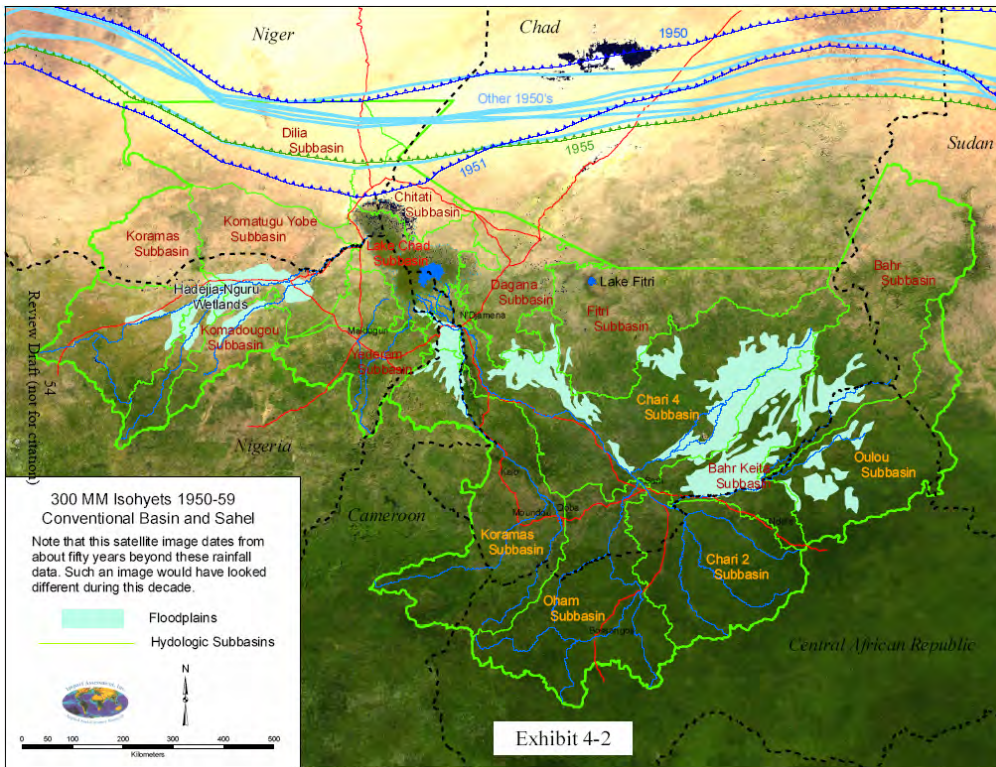
The Lake Chad Water Body have
being shrinking during this period in
a rate of

2.3% of its area per year



THREATS

1. Effects of global climate change



**Map Showing the
300mm Isohyets in the
1950s.**

**Map Showing the
300mm Isohyets in the
1990S**

Other parameters used to assess effects of climate change in Lake Chad include:



- **Temperature**
- **HumidityWind**
- **Evaporation from free water surface**
- **Transpiration**

Other threats to the region



- 2. Inefficient IWRM at National & Regional level**
- 3. Weak coordination and stakeholders participation**
- 4. Weak Economic situation of members states**
- 5. Legal framework (Legislation)**

Impacts of threats on the ecosystem



- 1. Changes and variability of hydrological regimes and fresh water availability**
- 2. Invasive species**
- 3. Decreased viability of biological resources including fish stocks**
- 4. Loss and/or modification of ecosystems**
- 5. Loss of biodiversity**
- 6. Sedimentation in rivers and water bodies as a result of upstream land degradation**
- 7. Water pollution**



CURRENT ACTION



- FEM-LCBC Project aimed at preparing a Strategic Action Programme (SAP) of Lake Chad Basin
 - Under this project, UICN worked to:
 - Develop Management Plan of Lake Chad
 - Support Local initiatives
 - Develop Management Plan for Waza Logone Floodplain
 - Prepare Management Plan for Waza National Park

PERSPECTIVE



- 1. Institutional review of LCBC to be completed and operational very soon**
- 2. Donors meeting scheduled in Nov 2008 to support implementation of the Strategic Action Plan**

Recommandation/Expectation



- 1. Need to raise awareness** on Lake Chad Ecosystem degradation at **Global, Regional** and **Local** level
- 2. International community** to support actions to reverse current water and soil degradation trend
- 3. IUCN** to search for funds to keep on working in Lake Chad Basin
- 4. States** to be supported to classify Lake Chad Water Body as **RAMSAR SITE**



Contact

Paul NOUPA

IUCN West & Central Africa

P.O.Box 5506 Yaoundé Cameroun

Tel: +237.99.64.16.46

paul.noupa@iucn.org